



## 24 Lansdowne Wood Close

London, SE27 0BY

**£1,300 Per Month**

This flat is not to be missed. Set in a private development just off Lansdowne Hill, this fantastic one-bedroom maisonette benefits from a residents' car park. Situated in a great location within easy reach of an array of local amenities and within walking distance of West Norwood train station.

Lambeth Council

Council Tax Band C £1566.00pa

Total deposit (5 weeks rent): £1500.00

### Viewing

Please contact our Galloways West Norwood Office on 020 8766 6111

if you wish to arrange a viewing appointment for this property or require further information

- ONE BEDROOM
- MAISONETTE
- OWN FRONT DOOR
- SPLIT LEVEL
- COMMUNAL PARKING
- 7 MINUTES WALK TO WEST NORWOOD STATION
- (WALKING TIMES ESTIMATED BY GOOGLE MAPS)



1



1



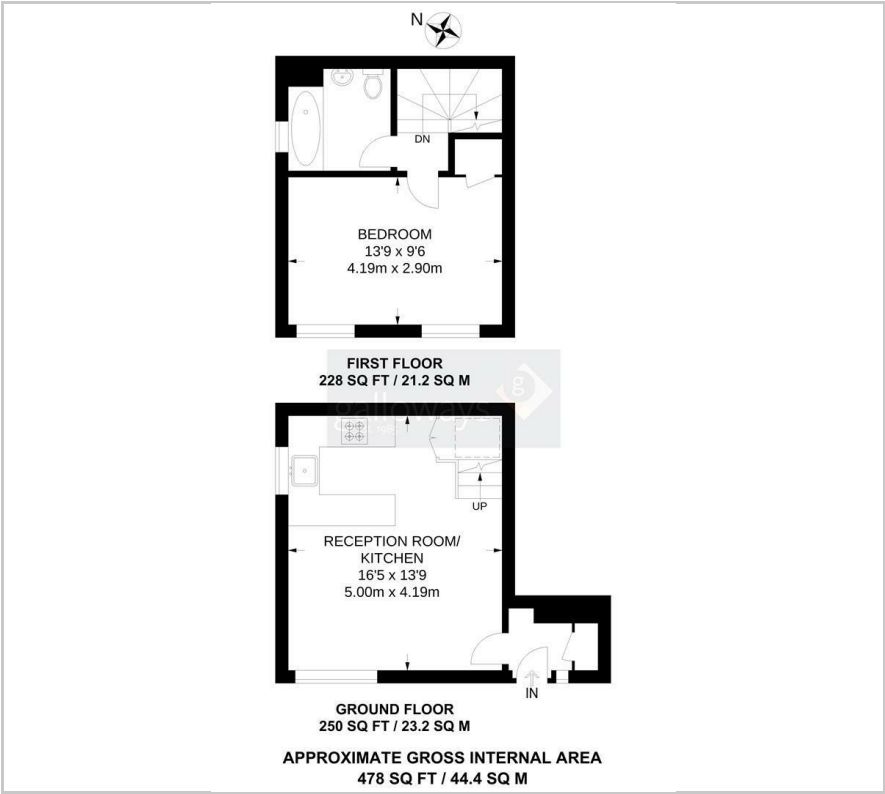
1



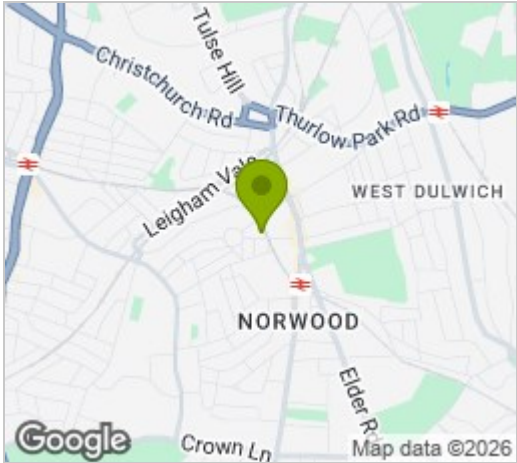
D



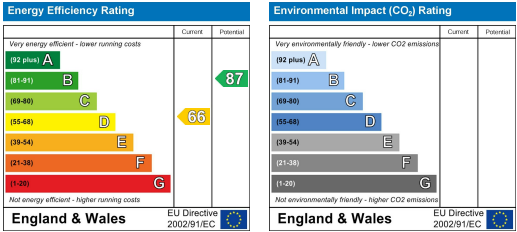
Floor Plan



Area Map



Energy Efficiency Graph



These particulars, whilst believed to be accurate are set out as a general outline only for guidance and do not constitute any part of an offer or contract. Intending purchasers should not rely on them as statements of representation of fact, but must satisfy themselves by inspection or otherwise as to their accuracy. No person in this firm's employment has the authority to make or give any representation or warranty in respect of the property.